

CERTIFIED LAND CORNER RECORDATION

DESCRIPTION OF CORNER EVIDENCE FOUND, AND ORIGINAL RECORD (if known)

Found 1 inch square bar 0.3 feet below county road surface

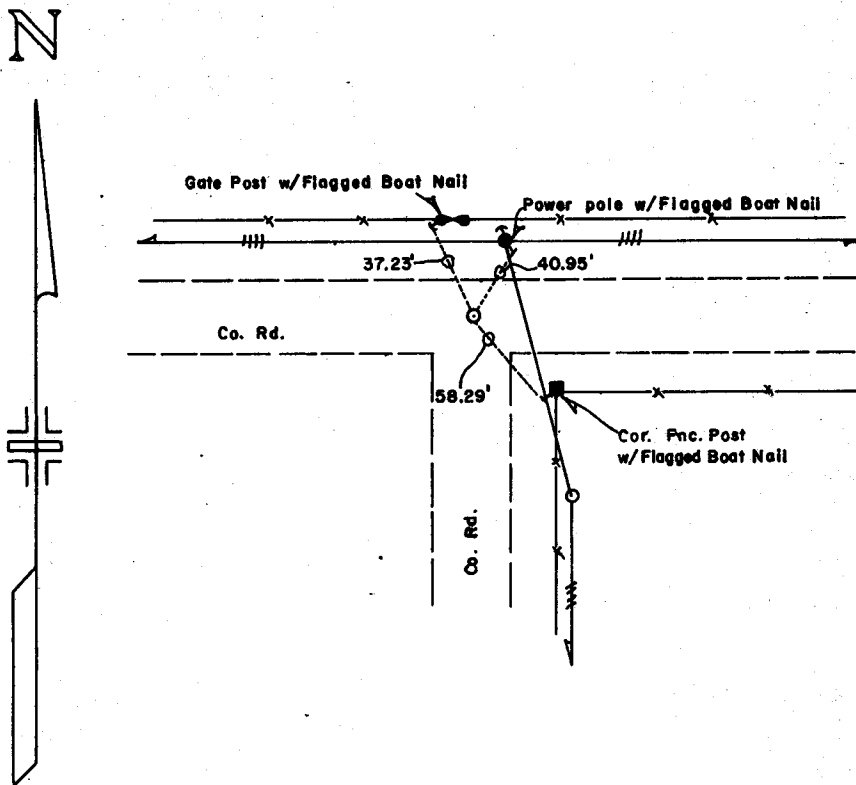
Location: NE Corner Sec. 4

33	34
4	3

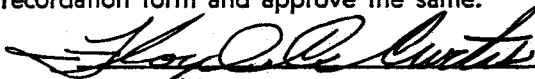
DESCRIPTION OF MONUMENT AND ACCESSORIES ESTABLISHED TO PERPETUATE THE ORIGINAL LOCATION OF THIS CORNER:

Left bar in tact and provided reference material for the relocation of the corner as shown in the sketch below.

SKETCH, WITH COURSE AND DISTANCE TO ADJACENT CORNER IF DETERMINED IN THIS SURVEY.
(May Sketch or Paste Reproduction on Reverse Side.)



I, Floyd C. Curtis certify that I have carefully performed or reviewed the work done on the diagrammed corner as reported on this recordation form and approve the same.


 Signature of Surveyor R. L. S. 317
Registration No.

STATE OF WYOMING,
Office of Clerk and Recorder,
County of Laramie

This "corner record" was filed for record on the 9 day of 29, 1977, was noted on the cross-index plat and is assigned page No. _____, in book No. _____.

	County Official			
Cross Index No. <u>A-13</u>	T. <u>16N</u>	R. <u>60W</u>	Mer. <u>6 PM</u>	
_____	T. _____	R. _____	Mer. _____	
_____	T. _____	R. _____	Mer. _____	
_____	T. _____	R. _____	Mer. _____	
_____	T. _____	R. _____	Mer. _____	
_____	T. _____	R. _____	Mer. _____	

12591
 Miner & Miner
 Shelby Co.

A-13 16-60